

1.9 HW Algebra 2 Honors

Name: \_\_\_\_\_

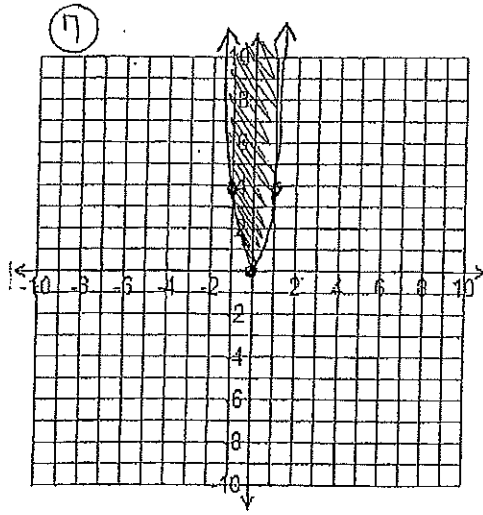
p. 70

3. C

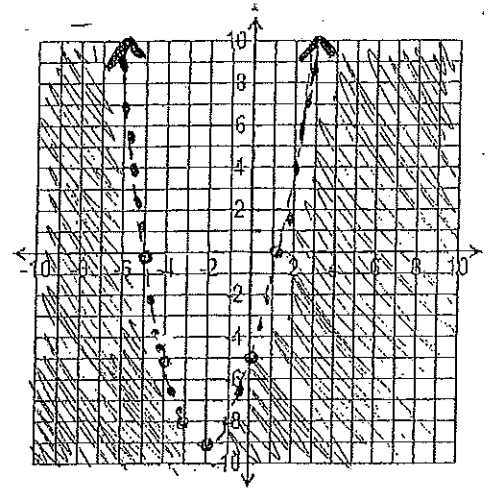
4. A

5. B

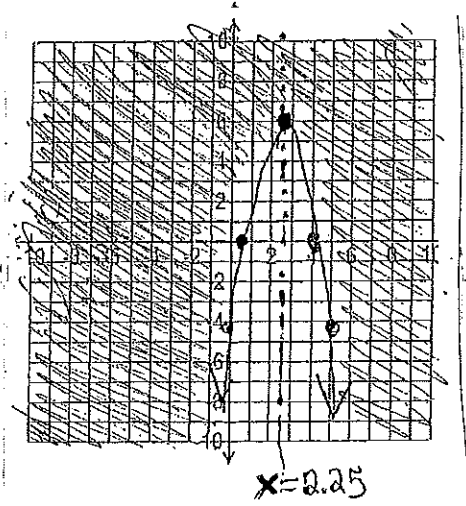
Graph 7, 10, 14, 20, 21, 23, 25



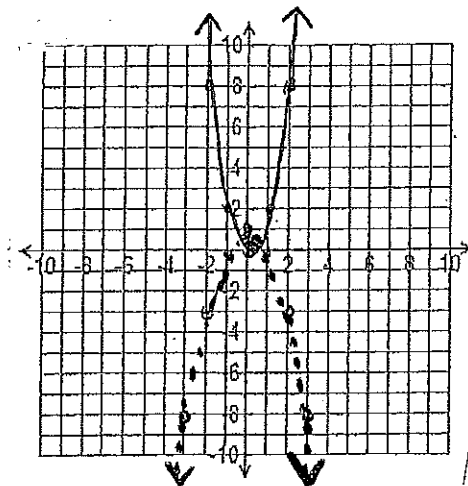
10.



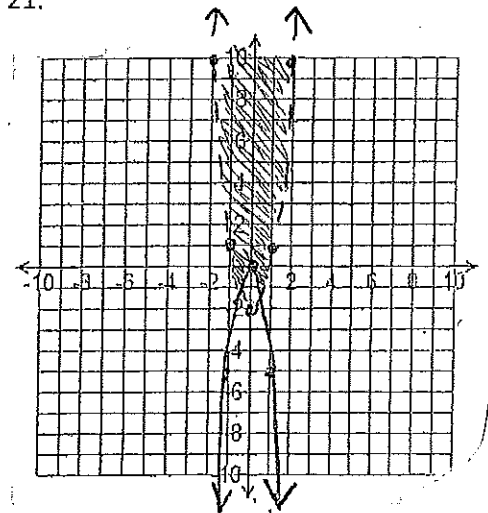
14.



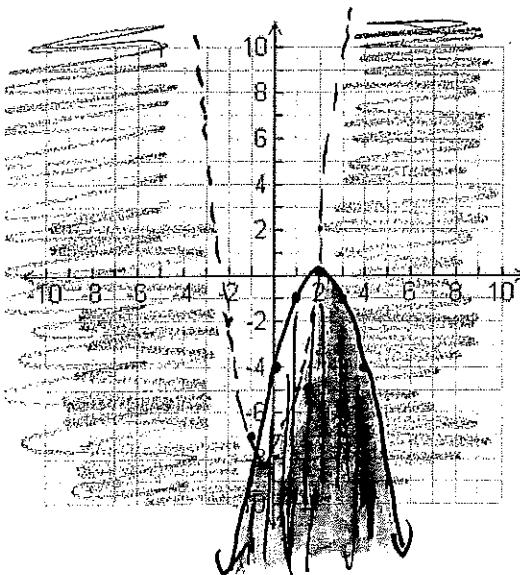
20.



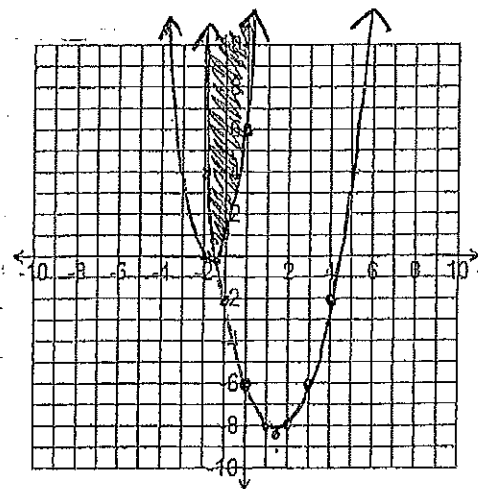
21.



23.



25.



For #'s 35, 36, 46, 48, 51, 61, 62

Use a sign chart (sign analysis) to solve. Final answers should be given in interval notation.

35.  $(0, 6)$

(Continued) Use a sign chart (sign analysis) to solve. Final answers should be given in interval notation.

36.  $[-7, -1]$

46.  $(-\frac{5}{2}, \frac{5}{2})$

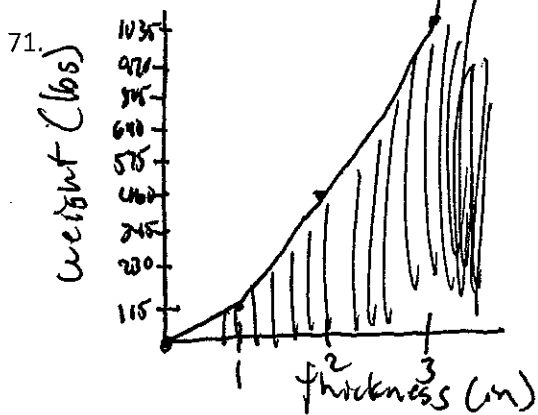
48.  $(-\infty, 4] \cup [7, \infty)$

51.  $(-\infty, -\frac{7}{2}] \cup [\frac{3}{2}, \infty)$

61. no solution

62.  $(-\infty, \infty)$

Word Problems: #'s 71, 72, 73, 75



72.  $(55, 447)$

73.  $(37, 40)$

75.

a)  $-0.054x^2 + 1.43x - 8 < 0$   
 $[0, 8.0) \cup (18.5, 26.5]$

b)  $x=15$  ,  $y=1.3$